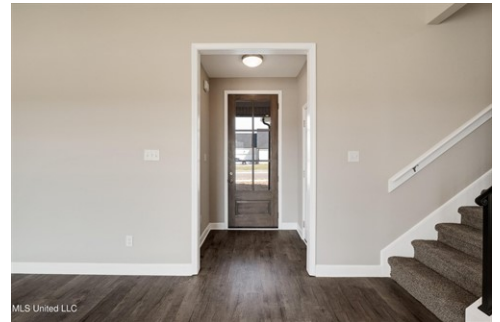




Floor Plan Model – Dove F

MLS United LLC

\$ 409,990



7560 Newbury Dr, Olive Branch, MS 38654

- » Beds: 5 | Baths: 3 Full
- » MLS #: 4108497
- » Single Family | 2,300 ft² | Lot: 30,056 ft² (0.69 acres)
- » More Info: [7560NewburyDr.IsForSale.com](https://www.7560NewburyDr.IsForSale.com)



Jennie Holliday
 (901) 334-6961 (mobile)
 (662) 548-2000 (office)
holliday@collins-maury.com
<https://www.hollidaysellshomes.com>



Coldwell Banker Collins-Maury
 3276 Goodman Rd E
 Southaven, MS 38672
 (662) 548-2000

Welcome to The Dove - the perfect open-concept plan with 5 bedrooms and 3 full baths. This home's main level offers an expansive family room bathed in natural light. Its electric fireplace, with floating cedarwood mantle, provides a cozy focal point. Nearby, the elegantly appointed kitchen features Shaker cabinets and solid surface countertops. The main-level primary bedroom provides the perfect, secluded retreat where you will unwind at the end of the day. It features a beautiful en-suite bathroom and dual walk-in closets. Opposite the primary bedroom are 2 bedrooms and a bathroom. Upstairs, the Dove has an additional bedroom, bathroom, and bonus room that has a full-sized closet if you need a fifth bedroom. Photos are from a previously built Dove and are for reference only. This home is under construction. Come to the Model Home at 5290 Douglas Drive, Olive Branch for more details. The Model Home is open Sundays 2-5 p.m. & Mon., Thurs., Fri., and Saturdays 1-6 p.m.

